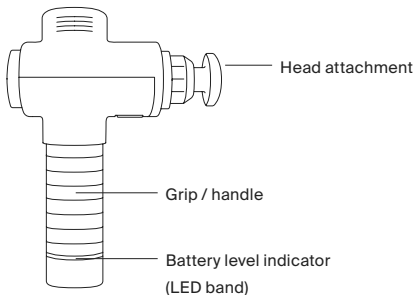


Let's
get
started

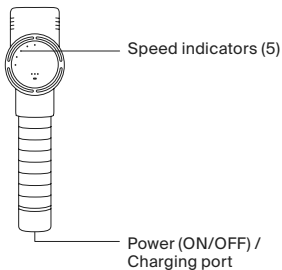
F1

Meet your new Hypervolt 2 Pro

Side view



Rear view



Before you start

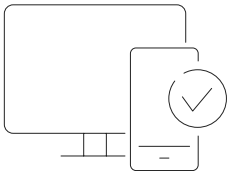
Download the Hyperice App

Get the most out of your Hypervolt 2 Pro, or any Hyperice device with the Hyperice App. Follow along to guided routines, track your progress, and get tips and tricks from the world's best pros.



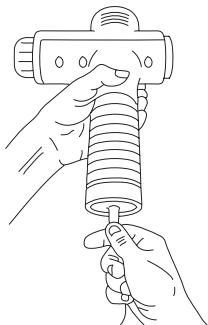
Register your device

Activate your warranty and ensure easy returns, repairs, or refunds at hyperice.com/register-product.



Charge your new Hypervolt 2 Pro

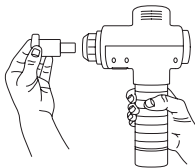
Plug in your new Hypervolt 2 Pro with the provided Hyperice charger.
Fully charge the battery for up to four hours before first use.



Start your session

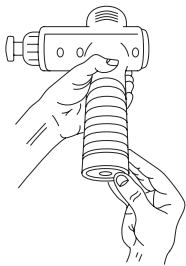
Choosing head attachments

Choose desired head attachment and insert directly into the opening while pushing firmly.



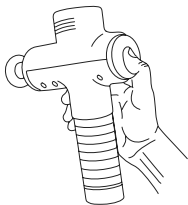
Powering up

Switch your Hypervolt 2 Pro to the ON position at the base of the handle. The LED band on the handle will illuminate indicating the battery level.



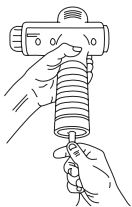
Adjusting speeds

The lowest speed is at the nine o'clock position and the highest speed is at the twelve o'clock position. Turn the digital control dial clockwise to the desired speed setting indicated by the LED lights illuminating on the face of the control panel. Your Hypervolt 2 Pro is now ready for use.



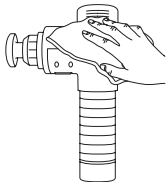
Recharging

Full charge is indicated when the LED light band on the handle remains green and fully illuminated. Only use the provided Hyperice charger.



Caring for your Hypervolt 2 Pro

Make sure the power is OFF and the battery charger is not attached. Use a damp, clean cloth to gently wipe your device. Store in a clean, cool, dry place, out of direct sunlight, when not in use.



We're here for you

HyperCare®

Get award-winning support from our HyperCare team – a group of specialists dedicated to your overall well-being and expert guidance on Hyperice products.



1.855.734.7224



hyperice.com



customersupport@hyperice.com