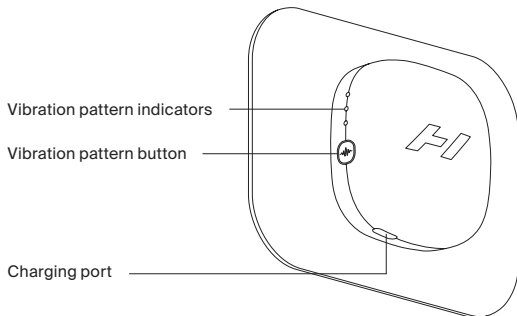
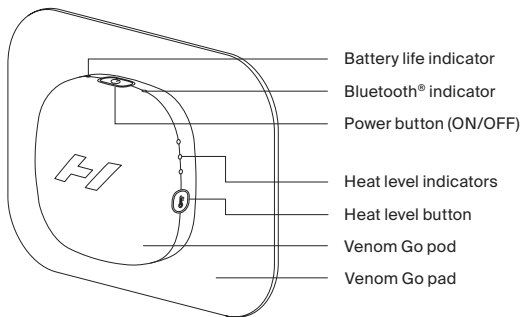


**Let's
get
started**



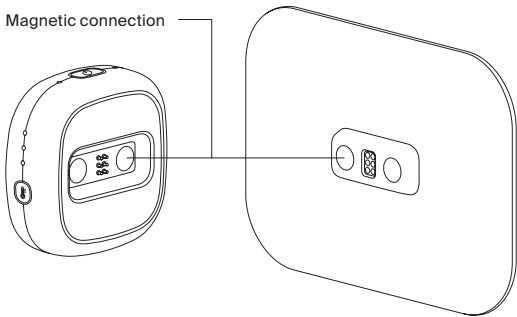
Meet your new Venom Go

Front view



Back view

Magnetic connection

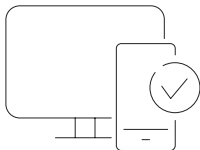


Please read the Operating Instructions before first use.

Before you start

Download the Hyperice App

Get the most out of your Venom Go, or any Hyperice device with the Hyperice App. Automatically stop and start your sessions and remotely control the heat and vibration.

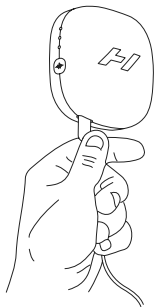


Register your device

Activate your warranty and ensure easy returns, repairs, or refunds at: hyperice.com/register-product

Charge your new Venom Go

Plug in your new Venom Go with the provided Hyperice USB-C until fully charged.



Start your session

Power up

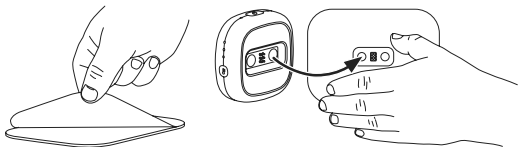
Turn your Venom Go ON by pressing the power button (top) once.



Apply pad and connect pod

Peel the Venom Go pad from liner and apply to skin. Select heat level and vibration pattern. Connect pod by using the magnetic connection (shown below / right).

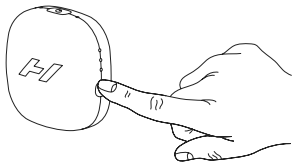
Note: Heat and vibration will not be felt until pod is connected.



WARNING: Only use on clean, dry skin. Do not use while perspiring. Do not dispose of pad liner. Reapply pad to liner after use and store in a cool, dry location.

Adjust temperature

Choose your desired temperature by pressing the heat level button (right side) once per level. The white lights will indicate the selected temperature.

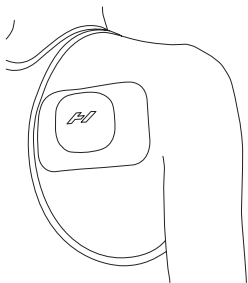


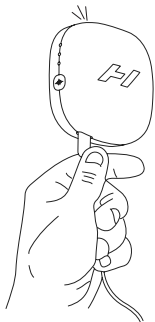
Add vibration

Choose your vibration by pressing the vibration pattern button (left side) once per pattern. The white lights will indicate the selected vibration pattern.

Enjoy your session

Feel the soothing relief of the Venom Go. Your session will automatically shut off after 10 minutes. Restart as needed.





Recharging

Full charge is indicated when battery indicator light on the pod remains green and fully illuminated.

Caring for your Venom Go

Make sure the power is OFF and the battery charger is not attached. Use a damp, clean cloth a gently wipe pod and pad (if necessary). Reapply pad to liner after use.

Store in a cool, dry area, out of direct sunlight when not in use.

Discard pad when it no longer adheres to skin. Additional pads can be purchased at hyperice.com.



We're here for you

HyperCare®

Get award-winning support from our HyperCare team – a group of specialists dedicated to your overall well-being and expert guidance on Hyperice products.



1.855.734.7224



hyperice.com



customersupport@hyperice.com

If outside of the United States, please visit hyperice.com/contact