

# Tefal®



Perfectmix +

**Incredible smoothness  
at your fingertips!**



**PerfectMix +**  
HIGH SPEED BLENDER PERFECTMIX+ 1200W  
BL811D38

## **Incredible smoothness at your fingertips**

With Perfectmix+ high speed blender, enjoy the ultimate blending experience thanks to its exclusive Powelix Technology, combining 6 stainless steel blades ensures high-performance blending and incredibly smooth results on even the hardest ingredients - time after time. Its powerful 1200W motor ensures fast results, while 3 pre-set programs and a backlit speed selector make blending easy. With a large capacity and thermo-resistant glass jar, it's the ideal blender for the whole family.

*\*compared to Tefal BL310*

## PRODUCT BENEFITS



### POWELIX TECHNOLOGY

Amplify the mixing power up to 30% faster\*

### OPTIMAL ROBUSTNESS

Optimized blades cutting angle for maximum resistance even on hardest ingredients



### OPTIMAL CUTTING PERFORMANCE

Extremely sharpened blades for incredible smoothness

### OPTIMAL VORTEX

Advanced geometry of blades for an homogeneous texture



### High performance

Powerful motor: 28000 Rotations Per Minute (RPM) and 1200W for great blending results in no time.

### 3 smart pre-set programs and backlit speed selector

3 pre-set programs (Smoothie, Ice Crush and Auto Clean) to create a variety of preparations and a backlit speed selector with pulse function to easily choose the speed you need, for total control. The light varies according to the speed.



### Large-capacity thermo-resistant glass jar

High-quality and thermo-resistant glass jar with a total capacity of 2L (1.5L working capacity). Prepare frozen and hot preparations one after the other without any risk of breaking the jar. Ideal to prepare for the whole family at once.

### Easy to clean

Removable stainless steel blades for quick and easy cleaning.



### Air cooling system

Designed motor ventilation to prevent overheating, combined with a resettable fuse, for better motor durability.

### Spatula accessory

Mix and tamp your thickest preparations.



### Repairable at fair price - 15 years

- 6200 approved repairers worldwide

## PRODUCT PHOTOS

### Other product packshots - H2

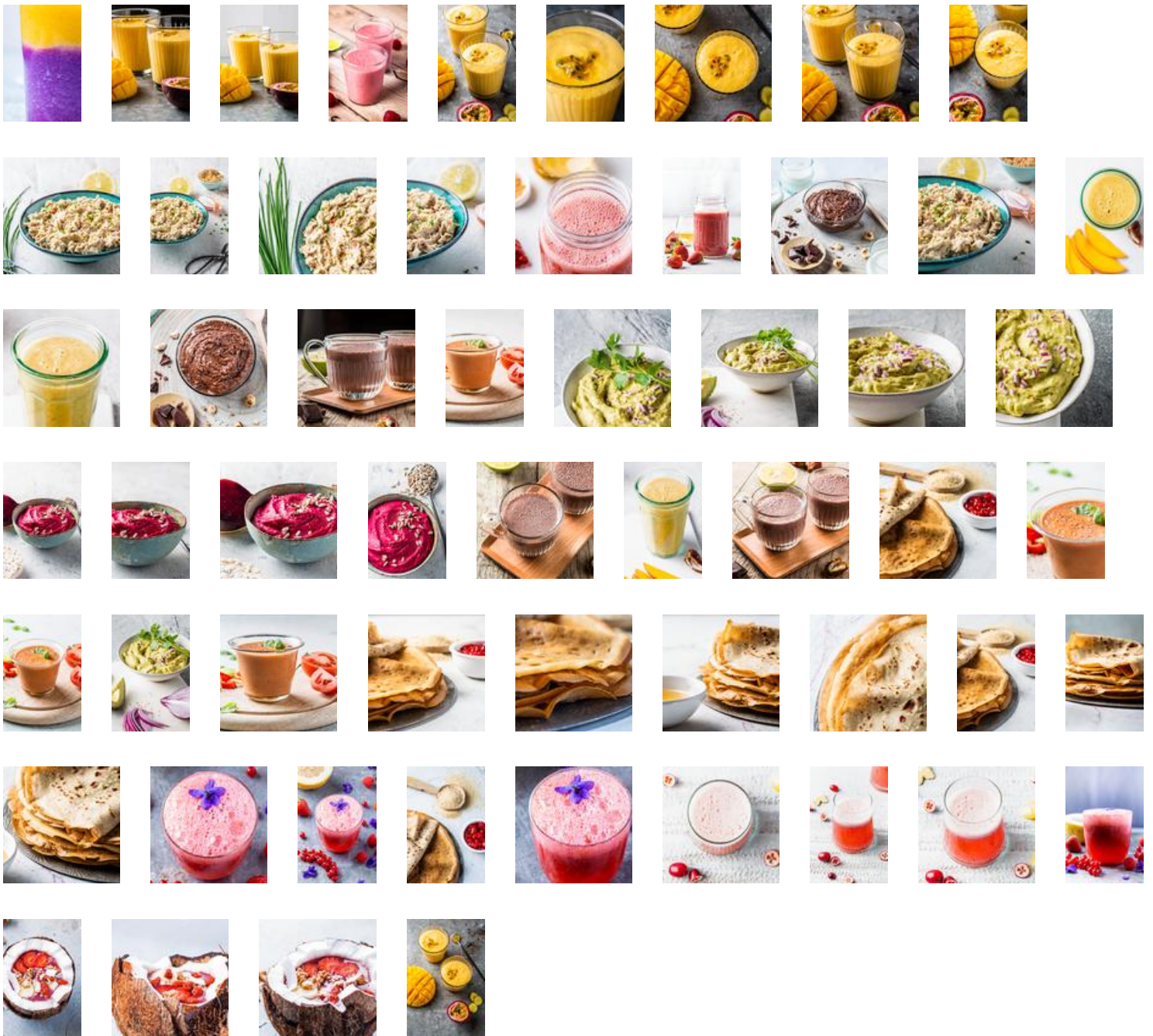


### Product benefits - Picture with captions

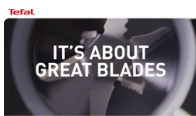


### Recipe photo(s)





**Video carousel**



**IFU**

1  
2  
3  
4  
5  
6  
7  
8  
9  
10  
11  
12  
13  
14  
15  
16  
17  
18  
19  
20  
21  
22  
23  
24  
25  
26  
27  
28  
29  
30  
31  
32  
33  
34  
35  
36  
37  
38  
39  
40  
41  
42  
43  
44  
45  
46  
47  
48  
49  
50  
51  
52  
53  
54  
55  
56  
57  
58  
59  
60  
61  
62  
63  
64  
65  
66  
67  
68  
69  
70  
71  
72  
73  
74  
75  
76  
77  
78  
79  
80  
81  
82  
83  
84  
85  
86  
87  
88  
89  
90  
91  
92  
93  
94  
95  
96  
97  
98  
99  
100

**safety sheet**

1  
2  
3  
4  
5  
6  
7  
8  
9  
10  
11  
12  
13  
14  
15  
16  
17  
18  
19  
20  
21  
22  
23  
24  
25  
26  
27  
28  
29  
30  
31  
32  
33  
34  
35  
36  
37  
38  
39  
40  
41  
42  
43  
44  
45  
46  
47  
48  
49  
50  
51  
52  
53  
54  
55  
56  
57  
58  
59  
60  
61  
62  
63  
64  
65  
66  
67  
68  
69  
70  
71  
72  
73  
74  
75  
76  
77  
78  
79  
80  
81  
82  
83  
84  
85  
86  
87  
88  
89  
90  
91  
92  
93  
94  
95  
96  
97  
98  
99  
100

## PRODUCT FEATURES

### MAIN FEATURES

- Power 1200 W
- Blades Technology Powelix blades = 30% faster
- Jar total capacity 2 L
- Jar material Glass

### OTHER FEATURES

- Removable blades Yes
- Number of blades 6
- Additional included accessories SPATULA
- Colours STAINLESS STEEL / DARK GREY
- Suction feet for stability Yes
- Programs 3 programs: Smoothie, Ice crush, Auto clean
- Jar useful capacity 1,75 L
- Ice crush function Yes
- Speed settings VARIATOR
- Cord Storage Yes
- Dishwasher safe Yes

- Country of origin China

## LOGISTICS DATA

CMMF : 7211002785

EAN CODE	PCS / PARCEL	PCS / LAYER	LAYER / PALLET	PCS / PALLET	PCS / CONTAINER
EAN ST : 3016661149832 EAN UC : 3016661149832	2	8	3	24	C20 : 980 C40 : 2 016 HQ4 : 2 046

	UNPACKED PRODUCT	PACKED PRODUCT	STANDARD PARCEL	PALLET
DIMENSIONS (D x W x H)	215 x 192 x 406 (mm)			
WEIGHT	4.35 (KG)			